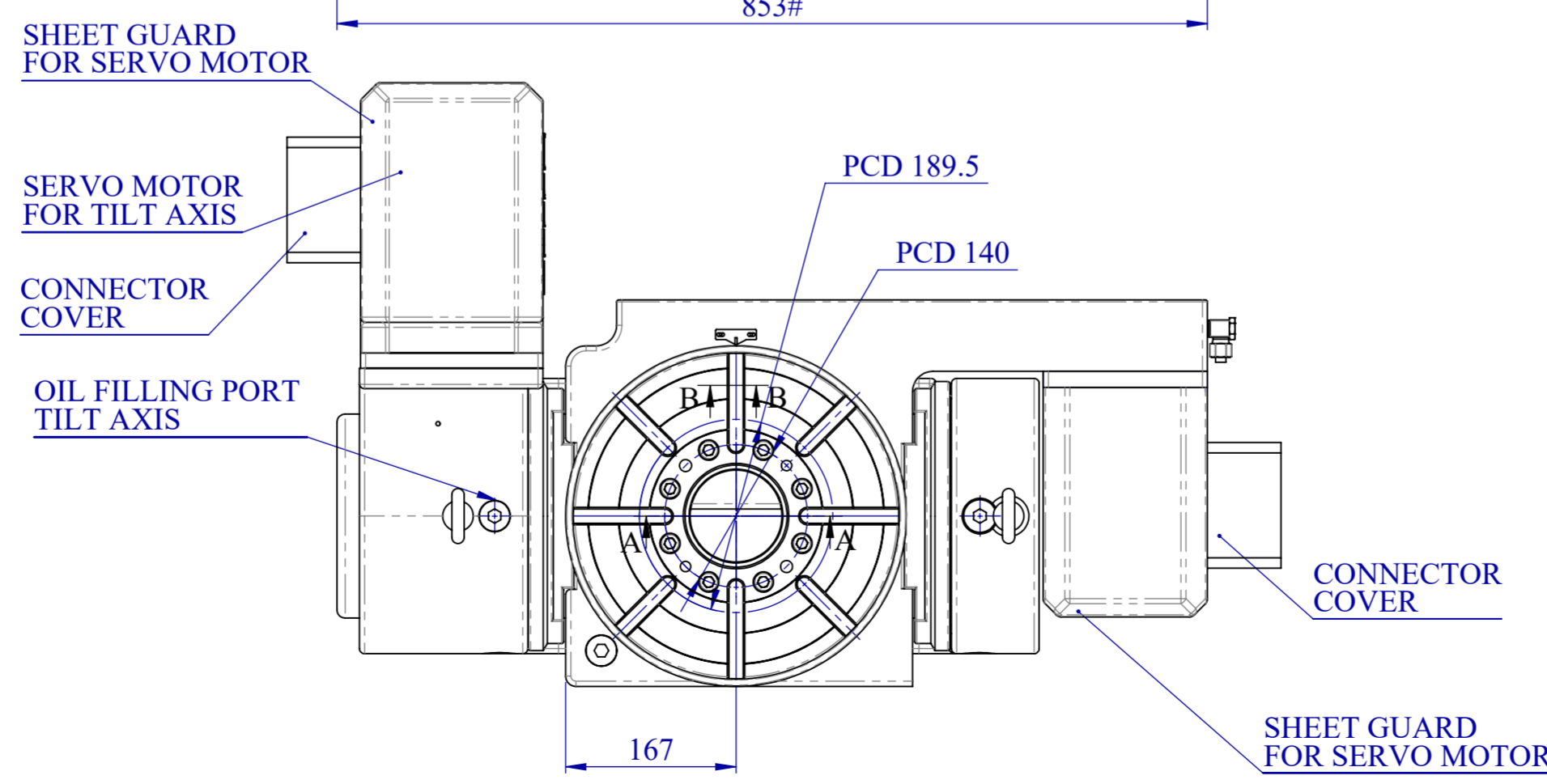
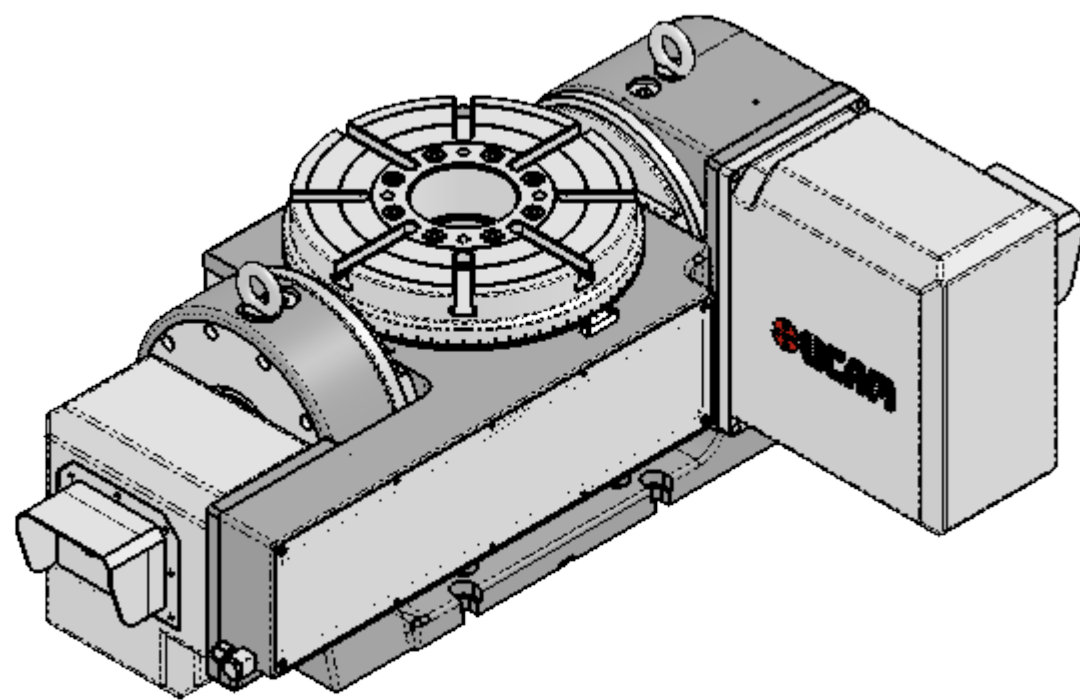
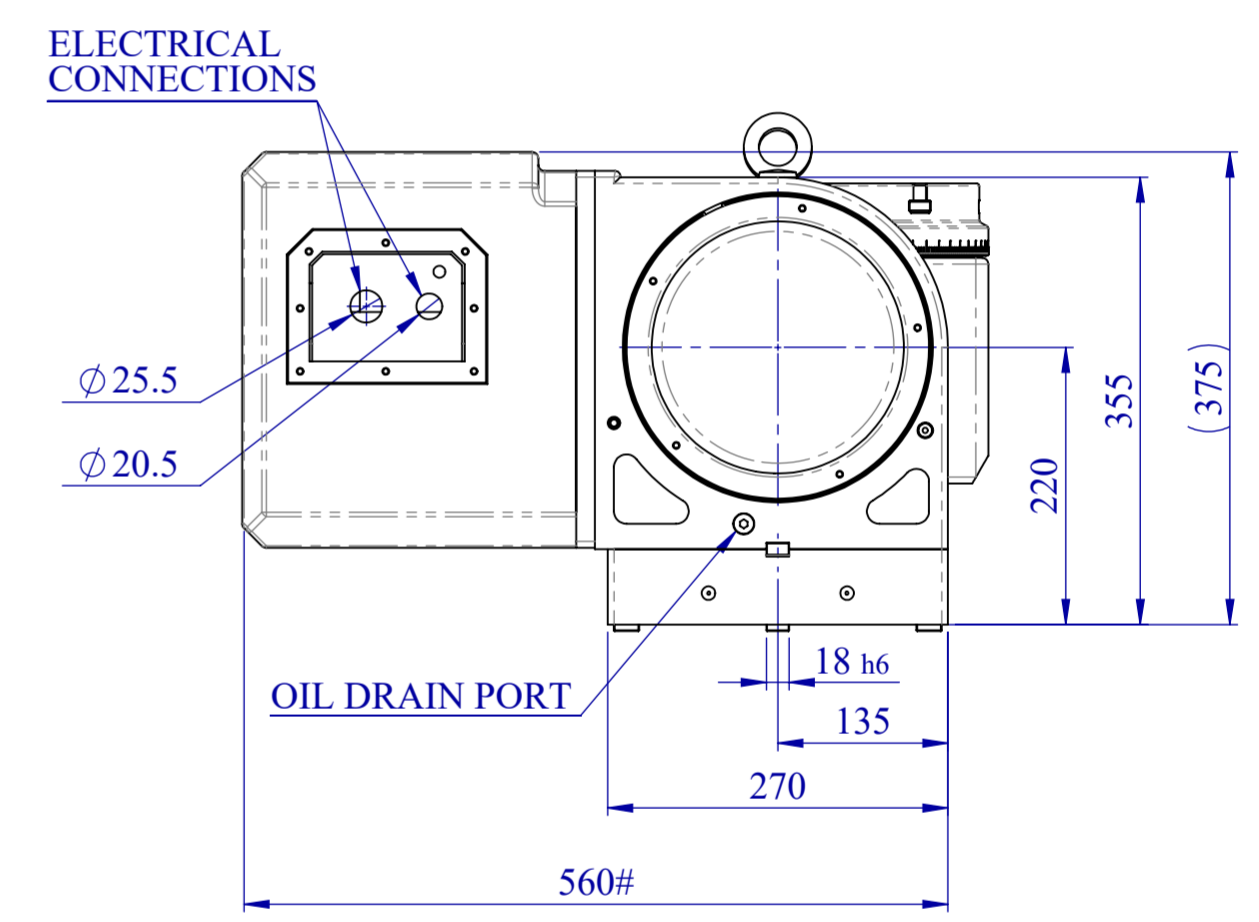
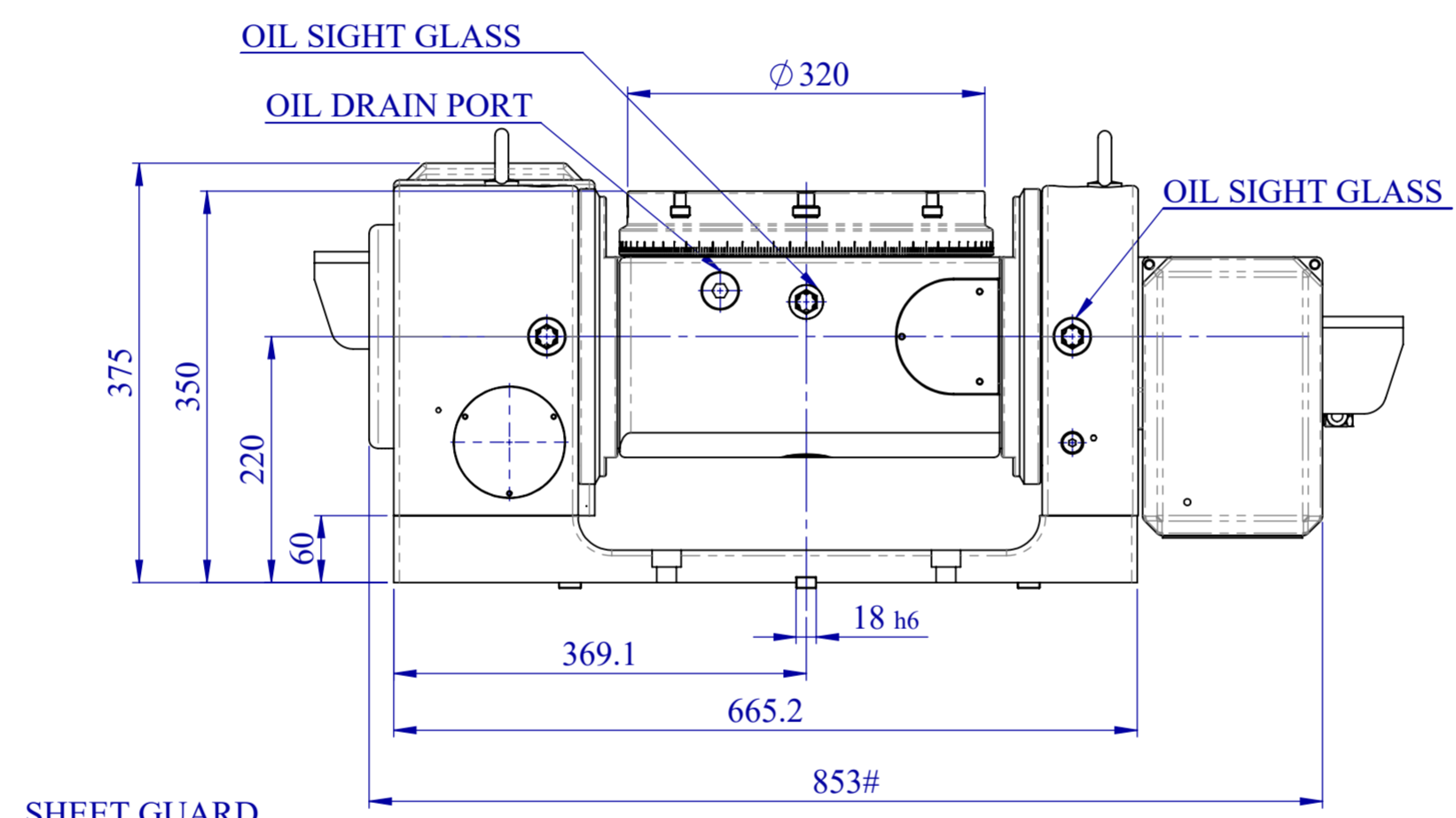
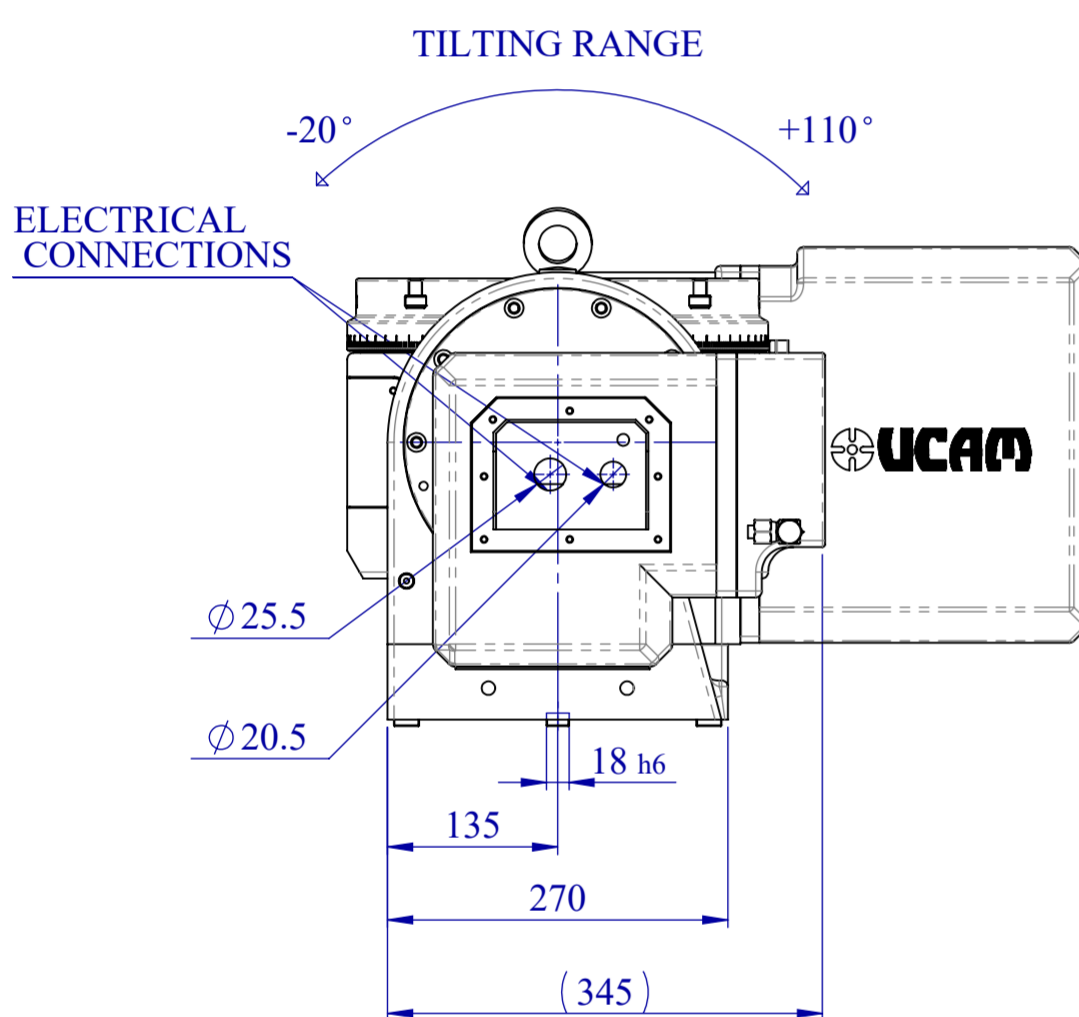
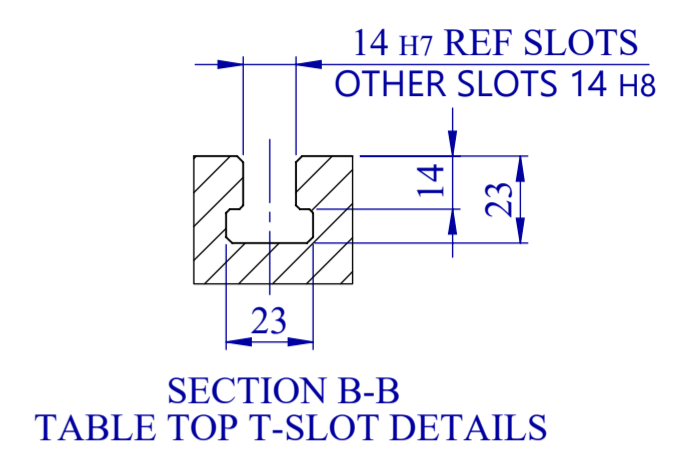
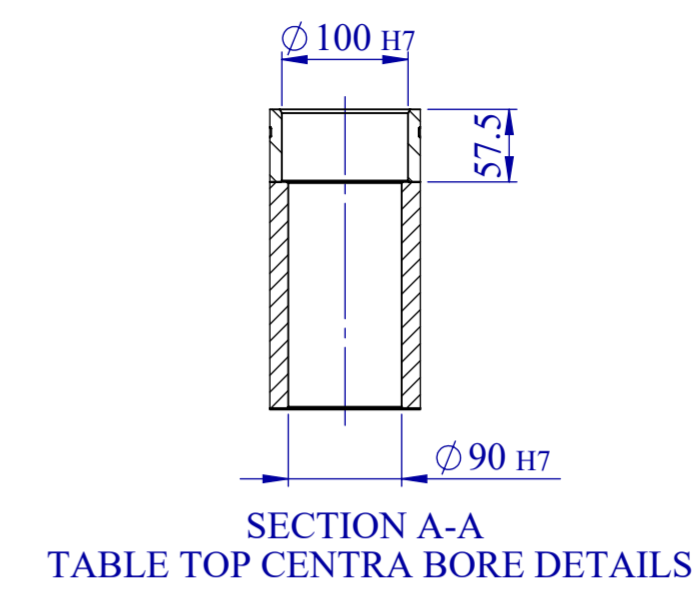
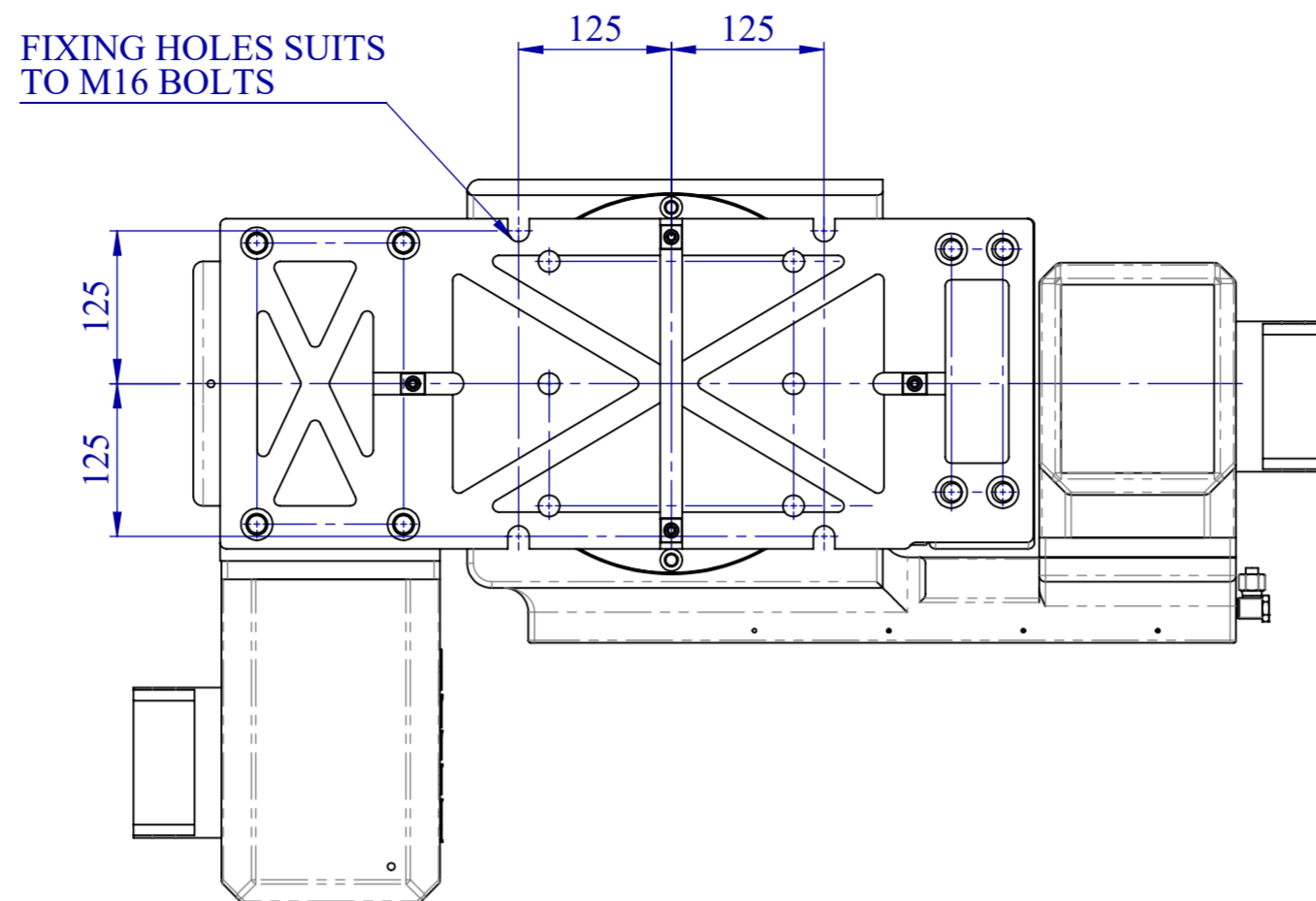
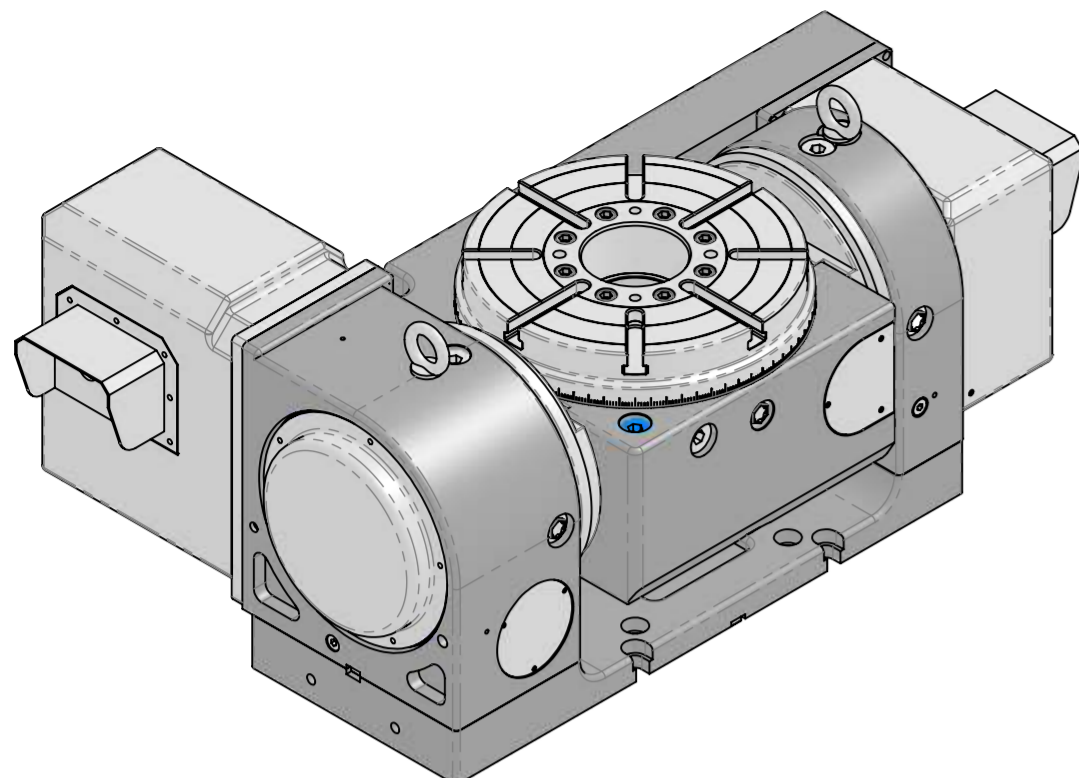


URH-320-TN LAYOUT DRAWING



NOTE: DIMENSIONS MARKED AS '#' IS DEPENDENT ON MOTOR BEING USED.

FOR MOUNTING INSTRUCTIONS, SEE UCAM OPERATOR'S MANUAL.

GO TO www.ucamind.com FOR FURTHER ROTARY SPECIFICATIONS

*The layout is tentative in nature and subject to change without prior notice. Please verify the same with UCAM for the latest layout.

SPECIFICATIONS



Model		URH-320-TN			
		units	Value		
Dimensions	Turn Table diameter	mm	ø320		
	Swing	mm	ø320		
	Center Bore Diameter (H7)	mm	ø100		
	T-Slot size	Ref slots (H7) 2nos	mm	14	
		Other slots (H8) 6nos	mm	14	
Tenon slot size (H7)		mm	18		
Operational	Servo Motor Torque	Rot Axis	Nm	6	
		Tilt Axis	Nm	8	
	Speed reduction ration	Rot Axis	-	1:180	
		Tilt Axis	-	1:90	
	Table gyration angle/pulse		-	0.001°	
	Table rotation speed (Motor 3000 rpm)	Rot Axis	rpm	16.67	
		Tilt Axis	rpm	33.3	
Tilting Range		degree	-20to+110		
Load and Force	Load capacity	Horizontal	kg	200	
		Vertical	kg	100	
	Clamp torque(Hydraulic @ 30 bar)	Rot Axis	Nm	1100	
		Tilt Axis	Nm	1100	
Driving torque		Nm	750		
Accuracies	Indexing Accuracy	Rot Axis	Arc sec	+/-15"	
		Tilt Axis	Arc sec	+/-30"	
	Repeatability		Arc sec	4"	
Net Weight (approx) (Rotary table only)			kg	350	
Recommended Drive (Rot Axis)	Motor Models *				
	Fanuc	Beta 8iS (Taper shaft/Straight Shaft)			
		Beta 8iSc (Taper Shaft/Straight Shaft)			
		Beta 8iF (Taper Shaft/Straight Shaft)			
		Alpha iS8 (Taper shaft/Straight Shaft)			
		Alpha iF8 (Taper shaft/Straight Shaft)			
	Siemens	1FK7063			
Mitsubishi	HF224S / HG224S				
Recommended Drive (Tilt Axis)	Fanuc	Beta 12iS (Taper shaft/Straight Shaft)			
		Beta 12iSc (Taper Shaft/Straight Shaft)			
		Beta iF8 (Taper shaft/Straight Shaft)			
		Alpha iS12 (Taper shaft/Straight Shaft)			
		Alpha iF8 (Taper shaft/Straight Shaft)			
	Siemens	1FK7063			
	Mitsubishi	HF223S / HG223S			

* Other Drives upon request

*The layout is tentative in nature and subject to change without prior notice.
Please verify the same with UCAM for the latest layout.