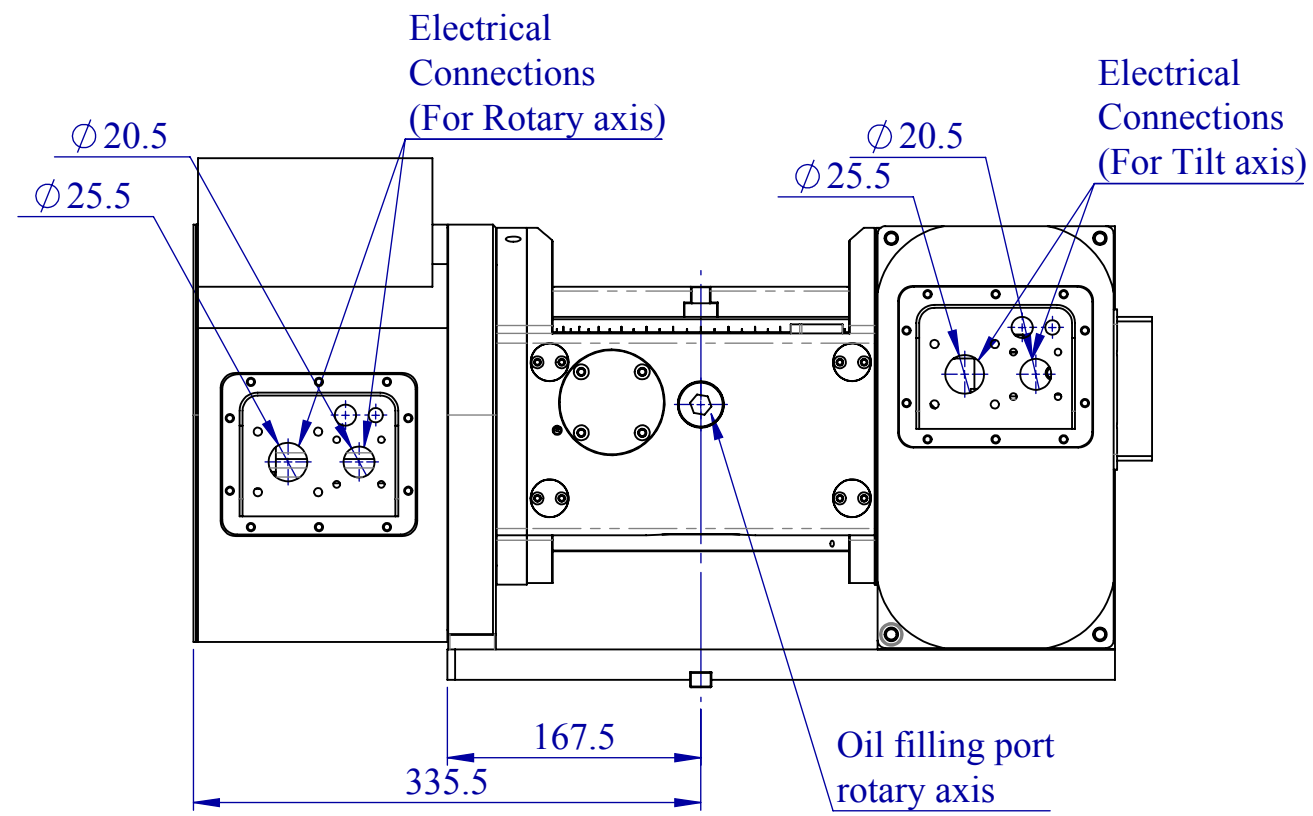
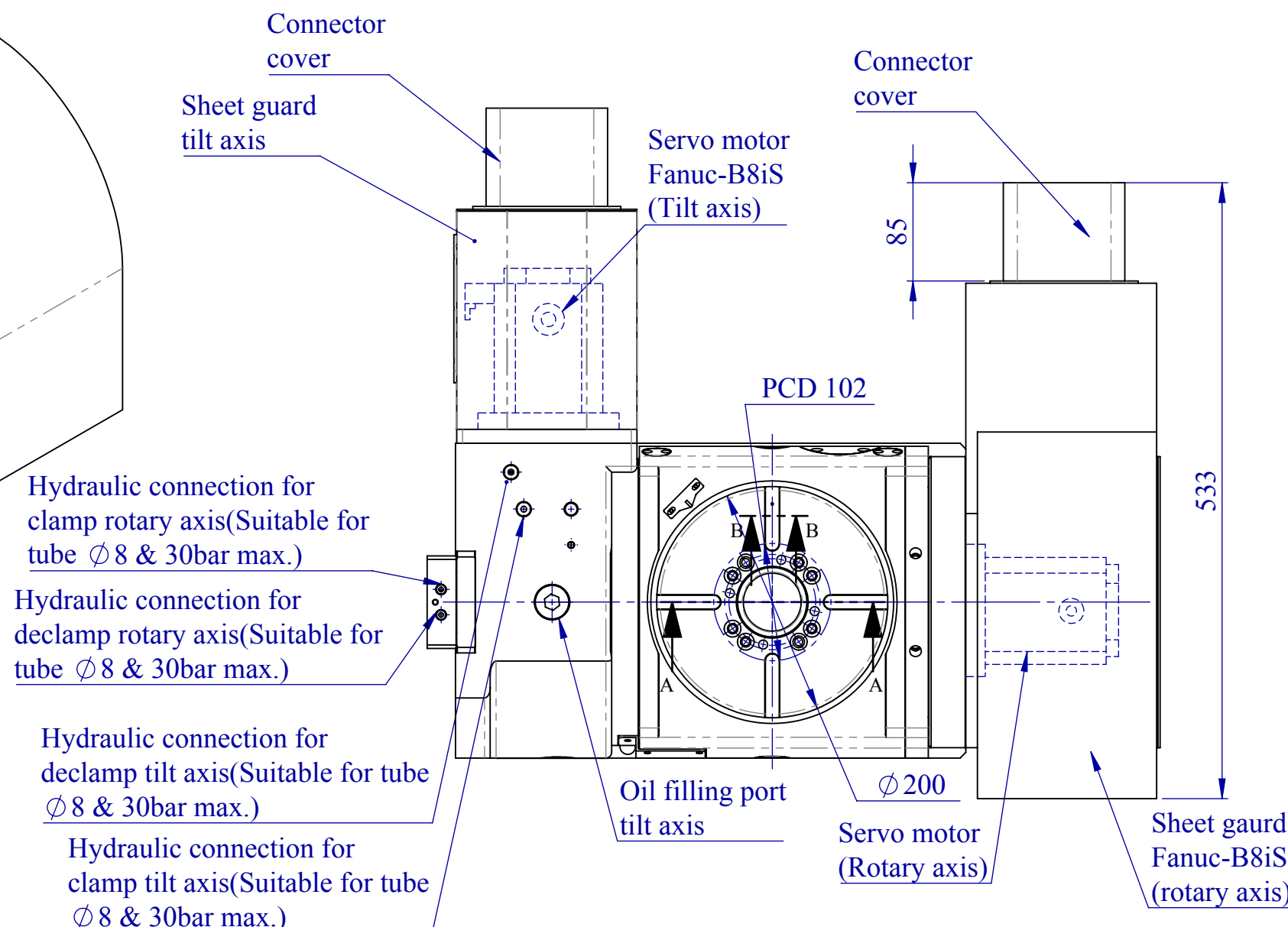
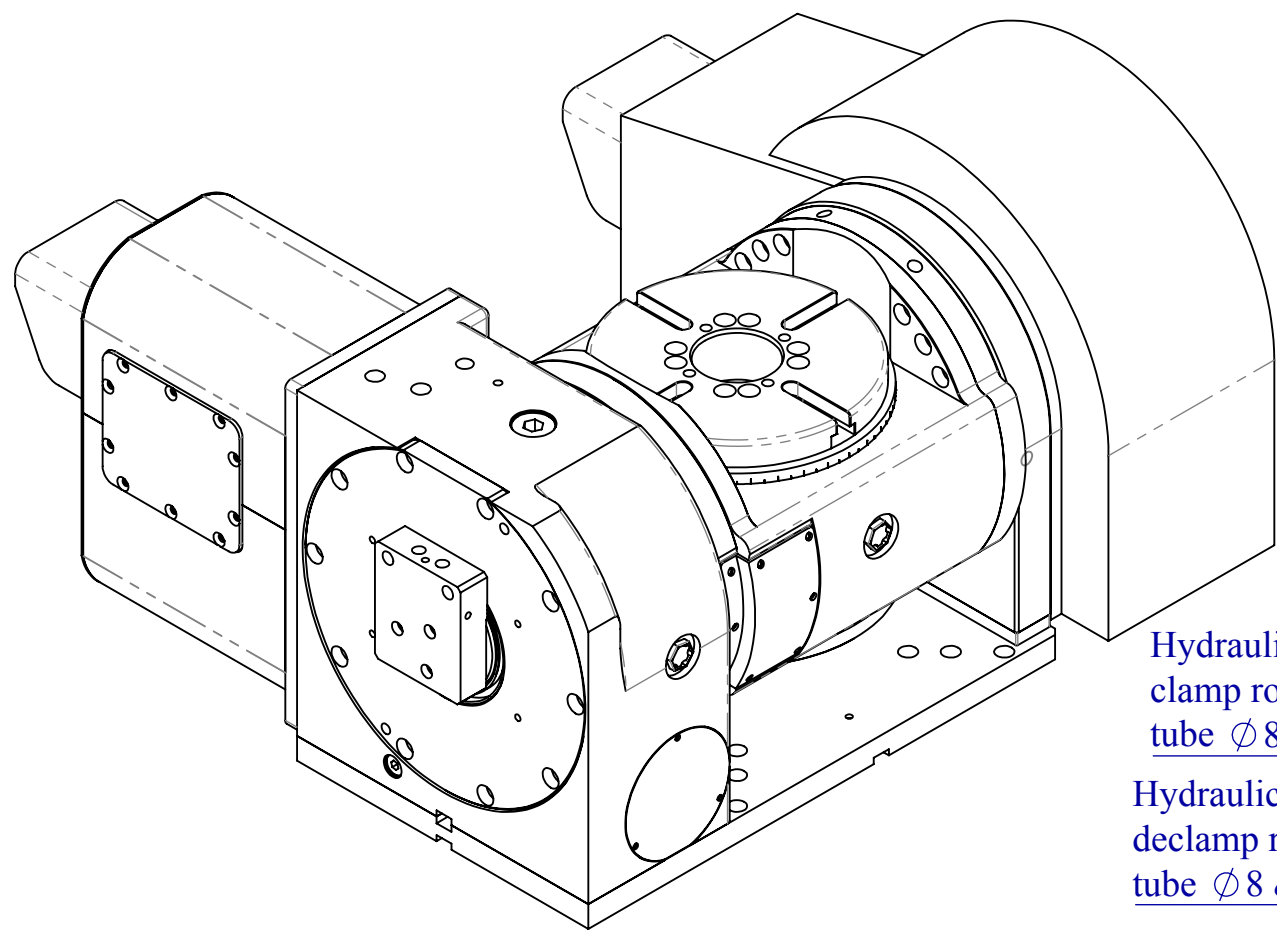
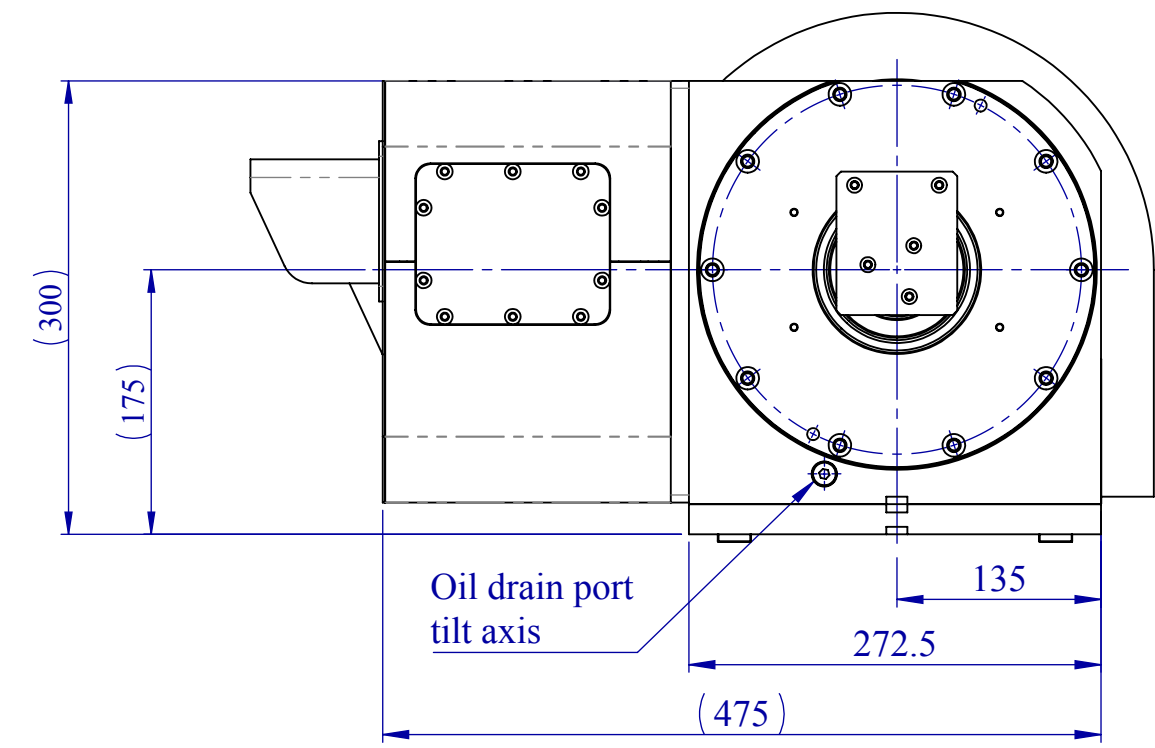
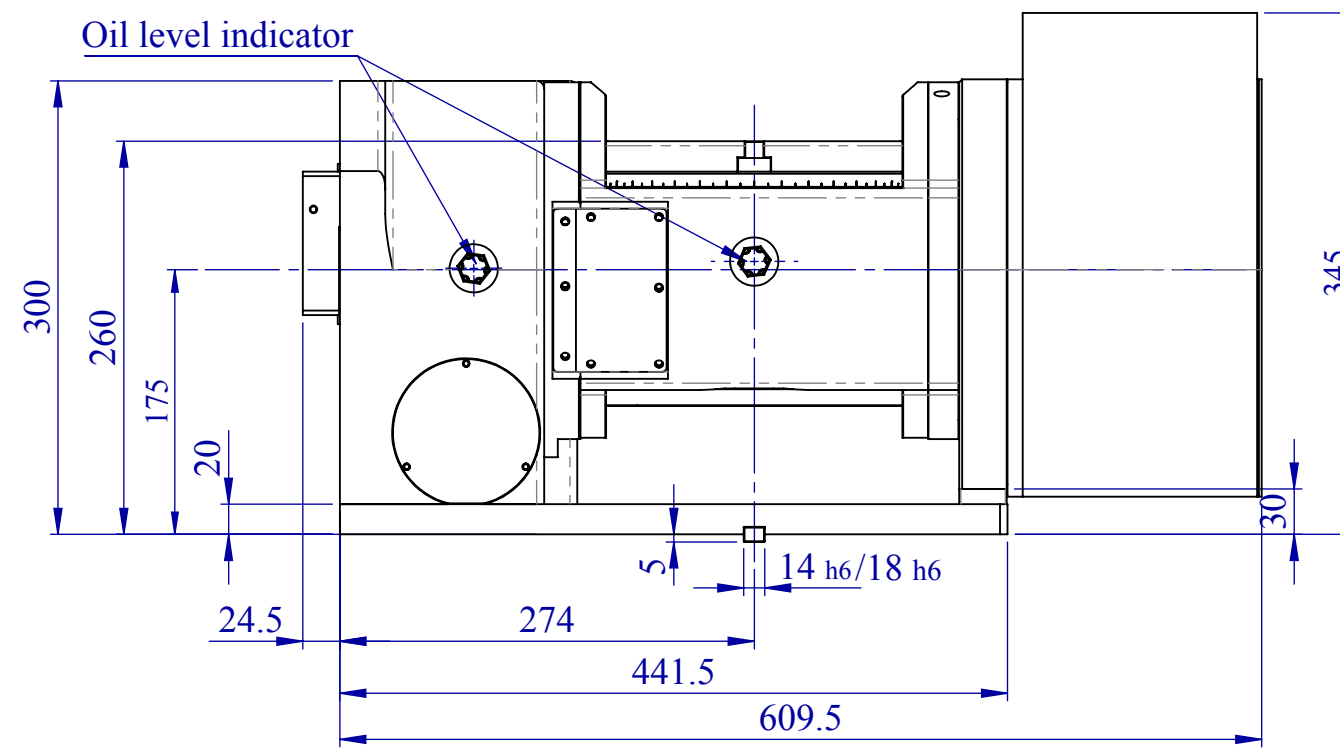
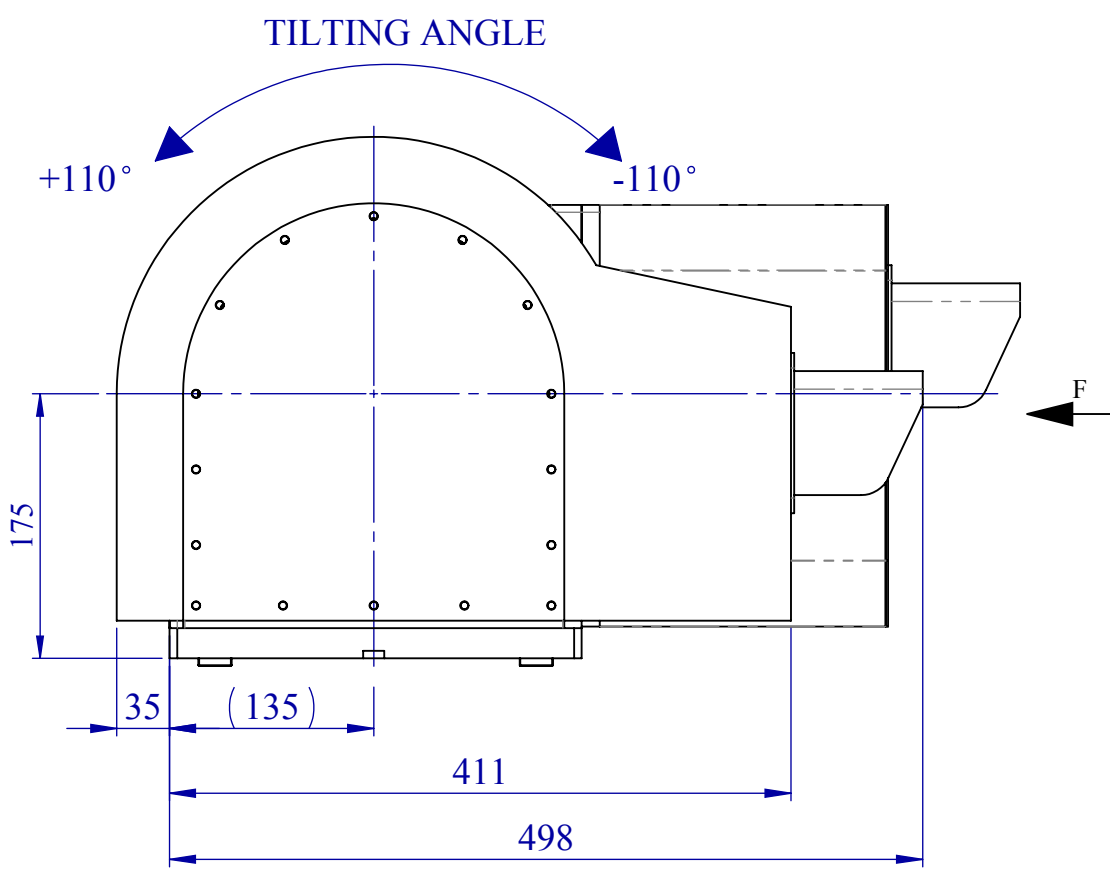
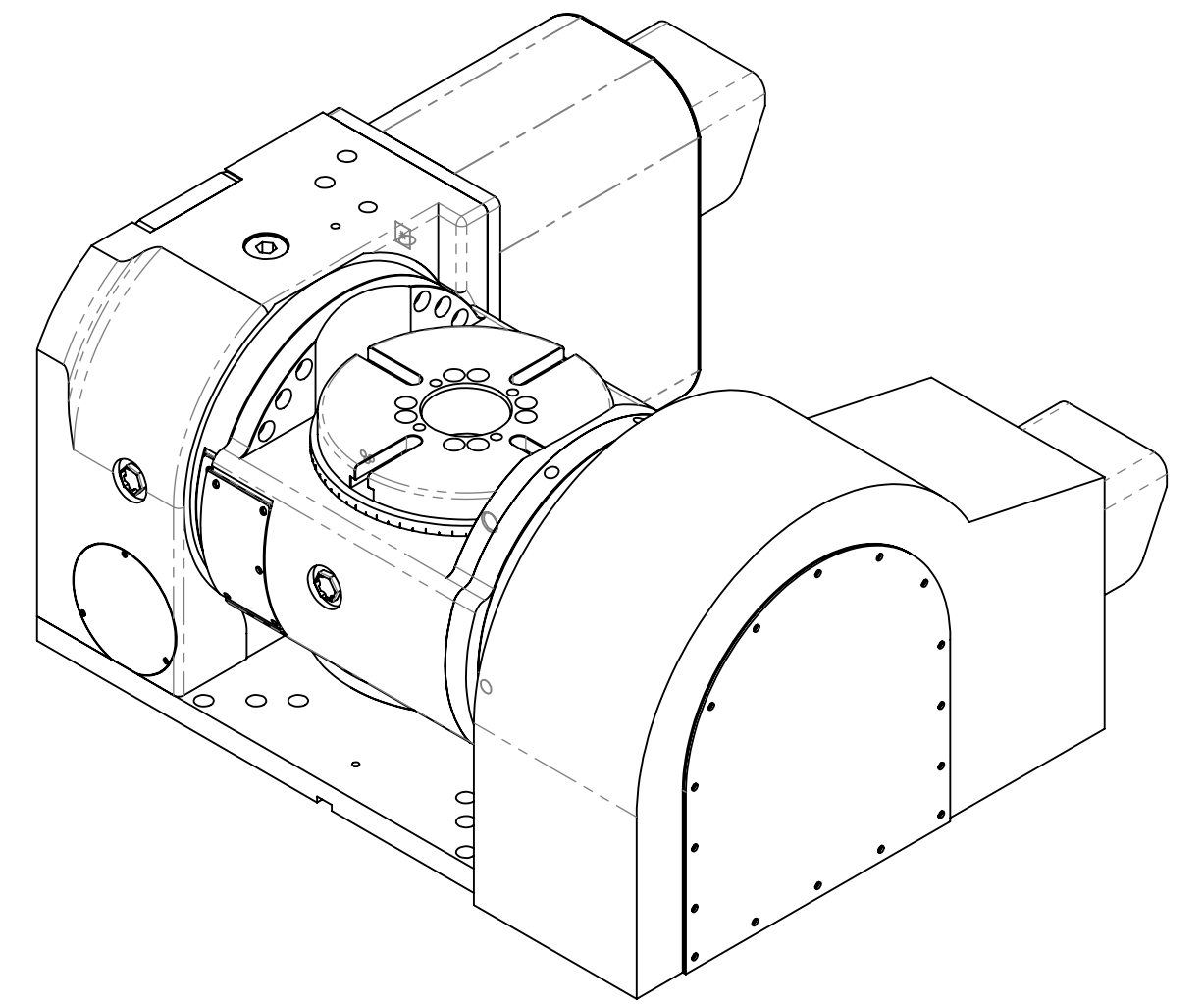
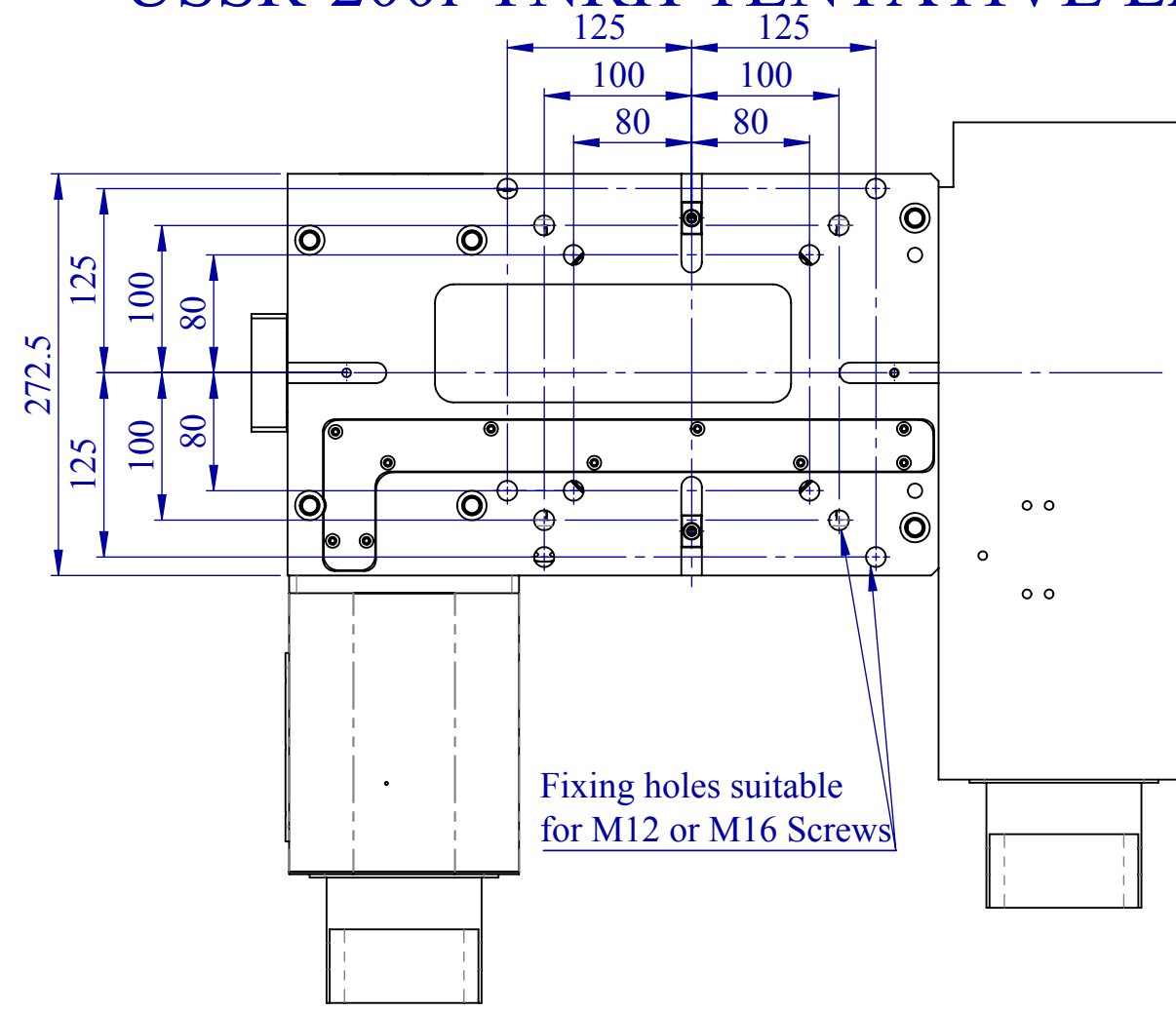


USSR-200i-TNRH TENTATIVE LAYOUT



VIEW F

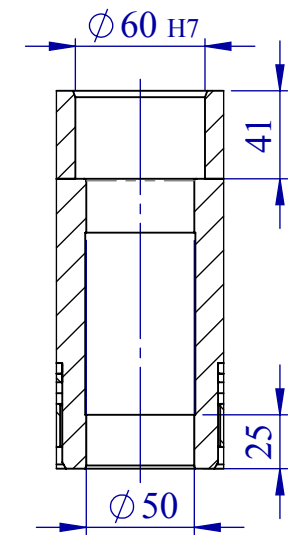


Hydraulic connection for clamp rotary axis (Suitable for tube $\phi 8$ & 30bar max.)

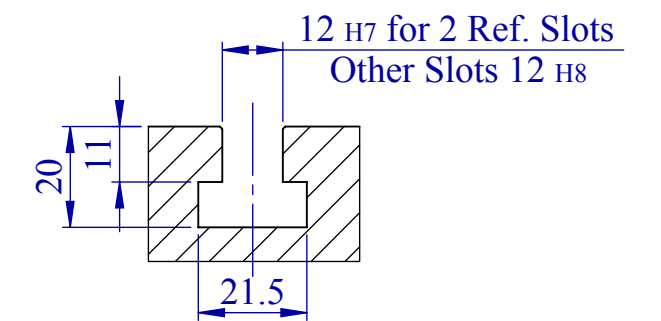
Hydraulic connection for declamp rotary axis (Suitable for tube $\phi 8$ & 30bar max.)

Hydraulic connection for declamp tilt axis (Suitable for tube $\phi 8$ & 30bar max.)

Hydraulic connection for clamp tilt axis (Suitable for tube $\phi 8$ & 30bar max.)



SECTION A-A
Centre bore details




SECTION B-B
T-Slot details

NOTE:

- 1) FITMENT NEED TO BE CHECKED BY THE CUSTOMER.
- 2) DIMENSIONS MARKED AS "#" IS DEPENDENT ON THE MOTOR BEING USED.

QTY.	00	17.12.2020	ORIGINAL				Prabodha	APPRD.
REV.		DATE	MODIFICATION				DRAWN	APPRD.
Drawn		Verified	Apprd.	Scale :	Matl:-	Net Wt. (kg):-	Finish:-	
Sign. Prabodha				NTS	Treatment:-			
Date 17.12.2020								
UCAM PVT.LTD				Title:- USSR-200i-TNRH Y-AXIS MOUNTING				
BENGALURU-560058				Drg. No:- D1007830R00				
							Sh 1	
							of 1	

DESIGN DEPT.	Ø200 TILTING TABLE		 Engineering Excellence. Exactly.
	MODEL: USSR-200i-TNRH-RP		
SPECIFICATIONS			
		UNIT	VALUE
A) Dimensional data			
Turn Table size		mm	Ø200
Center bore diameter		mm	Ø60H7
Tennon slot size(mm)		mm	14H7
T- slots			
-	Number	No's	4
-	Reference slot width	mm	12H7 x 2
-	Other slots width	mm	12H8 x 2
Swing(mm)		mm	Ø 220
B) Operational data			
Table gyration angle / pulse		deg	0.001°
Speed reduction ratio	Tilting axis		1:120
	Rotary axis		1:90
Table rotation speed	Tilting axis(Motor3000Rpm)	rpm	25
	Rotary axis(Motor3000Rpm)	rpm	33.33
C) Load and force data			
Servo Motor Torque	Tilting axis	Nm	3
	Rotary axis	Nm	6
Clamp Torque (Hydraulic @ 30 bar)	Tilting axis	Nm	750
	Rotary axis	Nm	650
Clamp Torque (Pneumatic @ 5 bar)	Tilting axis	Nm	550
	Rotary axis	Nm	550
Load capacity (kg)	Horizontal	kg	100
	Vertical	kg	65
Driving torque		Nm	250
D) Accuracies			
Table top flatness		mm	0.01
Table top surface run out		mm	0.015
Parallelism of table top to base		mm	0.02
Center bore run out		mm	0.01
Indexing accuracy	Tilting axis	Arc Sec	±30"
	Rotary axis	Arc Sec	±15"
Tilting range		deg	-110° to +110°
Repeatability (Rotary axis)		Arc Sec	4"
E) Overall weight			
Total weight (Approx.)		kg	200
Drawn by : Prabodha Date : 21/01/2021		Alterations:	Doc. No: D1007782R00 Sh no:01/01